

# Green Learning Environments

---

## Appendix



**Title:** Green Learning Environments: The Benefits of (Learning in) Nature for Children with Special Educational Needs – Appendix

**Acronym:** Green Learning Environments – Activity Pack

**Editor:** M. Sc. Natalija Györek

**Design:** Alenka Planinc Kuhar, [www.JAdesign.si](http://www.JAdesign.si)

**English translation:** Ensitra translation, Brigita Vogrinec s.p.

**Price:** free of charge

**Publication:** electronic publication

**Co-funding:**

This publication has been created under the project **Green Learning Environments – Taking Advantage of the Stimulants in Green Environments for Non-Formal Learning with Children with Cognitive Disabilities and Learning Disorders**, which was made possible with financial assistance from the European Union through the ERASMUS+ programme.

The European Commission support for the production of this publication does not constitute an endorsement of the contents which reflects the views only of the authors, and the Commission cannot be held responsible for any use which may be made of the information contained therein.

**Project number:** ERASMUS-2016-1-BE02-KA201-017373





**WORKS BY ARTISTS (Andy Goldsworthy)**

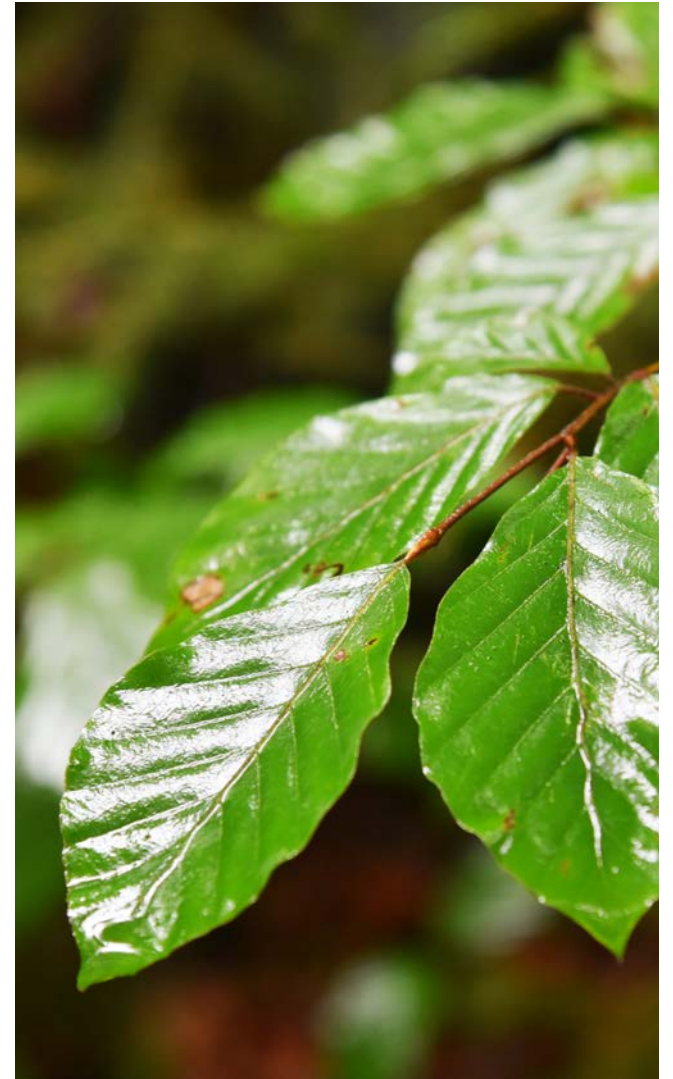




*Photo: Alyson Boothroyd*

## BASKET





**LEAF**

*Photo: Institute for Forest Pedagogics*





*Photo: Alyson Boothroyd, Institute for Forest Pedagogics*

**CONE**





**BIRD FEATHER**

*Photo: Institute for Forest Pedagogics*





Photo: Alyson Boothroyd

## BRANCHES







*Photo: Institute for Forest Pedagogics*

## STONE





**FLOWERS**

*Photo: Institute for Forest Pedagogics*





Photo: Alyson Boothroyd

## PAINT AND PAINTBRUSH





**MUD MAN IN THE WOODLAND (before and after)**

*Photo: Institute for Forest Pedagogics, Special School Jela Janežiča Škofja Loka*





**CLAY AND JUG WITH WATER**

*Photo: Alyson Boothroyd*





**MAKING OF MUD MAN**

*Photo: Institute for Forest Pedagogics*





**FACIAL FEATURES: EYES, NOSE, EYEBROWS, BEARD ...**





**SOUNDS OF NATURE**

*Photo: Institute for Forest Pedagogics*







**SHADOW INHABITANTS OF THE FOREST**

*Photo: Barbara Škerlec*

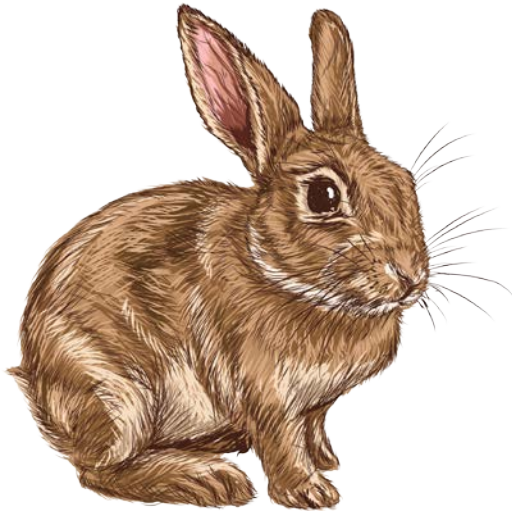




## SHADOW INHABITANTS OF THE FOREST

*Photo: Barbara Škerlec*





**WOODLAND ANIMALS: BEAR, FOX, DEER, RABBIT, BIRD, SQUIRREL**

*Photo: Marjan Cigoj, Stockunlimited*





## SMALL FOREST ANIMALS

Photo: Institute for Forest Pedagogics





*Photo: Institute for Forest Pedagogics*

## SMALL FOREST ANIMALS

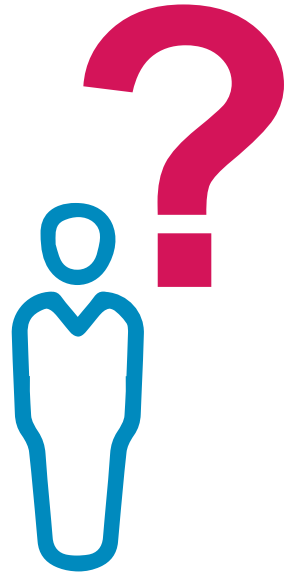




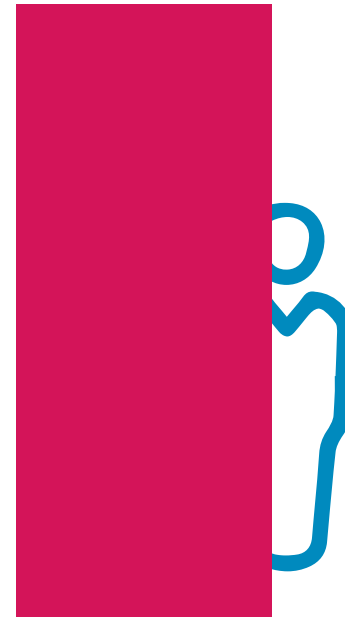
*Photo: Alyson Boothroyd*

## STUMP





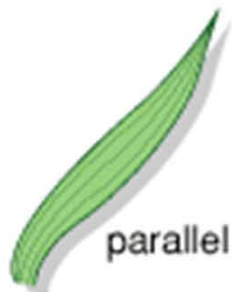
**WHO?**



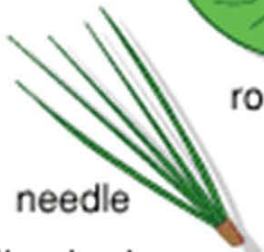
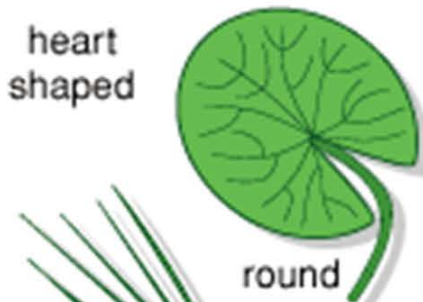
**HIDDEN**



**Veins**



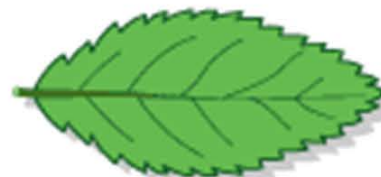
**Shapes**



**Arrangement**



**Edges**



**Arrangement on the Stem**

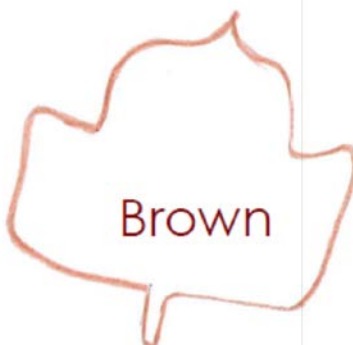






# Leaf hunt!

Let's go looking for leaves!!  
Can you tick off all 9?



**Find a few small stones and use them to measure:**

- the lengths of 3 leaves, namely oak, beech and chestnut (when searching for the leaves refer to photographs of oak, chestnut and beech trees or to the field identification keys of the Institute for Forest Pedagogics);
- the height of a fern (refer to a photograph) and
- the diameter of a stump.

**Find a few sticks and use them to measure:**

- the width of a forest road and
- the diameter of a stump.

**Use your foot to measure:**

- the width of a forest road and
- the diameter of a stump.

**Use your arms or body to measure:**

- the circumference of the trunks of an oak, beech and chestnut tree;
- the width of a forest road and
- the length of a sawn-off trunk.

Enter the measurements into the table. If the fields under a specific measurement are blackened, it means that you do not have to perform that measurement.



**APPENDIX 25 / ACTIVITY 17: Measuring with Frank the Forester**

	<b>Measuring with stones</b>	<b>Measuring with sticks</b>	<b>Measuring with feet</b>	<b>Measuring with arms or body</b>	<b>Measuring with a tape measure (in centimetres)</b>
<b>Length of an oak leaf</b>					
<b>Length of a beech leaf</b>					
<b>Length of a chestnut leaf</b>					
<b>Circumference of an oak</b>					
<b>Circumference of a beech</b>					
<b>Circumference of a chestnut</b>					
<b>Length of a sawn-off trunk</b>					
<b>Width of a forest road</b>					
<b>Height of a fern</b>					
<b>Diameter of a stump</b>					





**OAK**





**BEECH**





**CHESTNUT**





**FERN**





**MEASURING WITH FRANK THE FORESTER**

*Photo: Special School Jela Janežiča Škofja Loka*







**FOREST HOUSE**

*Photo: Institute for Forest Pedagogics*





## FOREST BIVOUAC

*Photo: Institute for Forest Pedagogics*





## NATURAL MOVEMENT

Photo: Institute for Forest Pedagogics





**HAPPY**



**ANGRY**



**SAD**





**I LIKE IT**



**I DON'T LIKE IT**



**LONG**



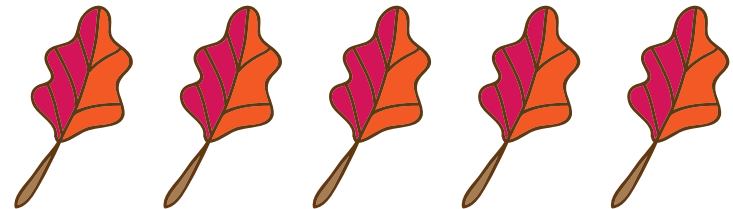
**SHORT**



**SMALL**

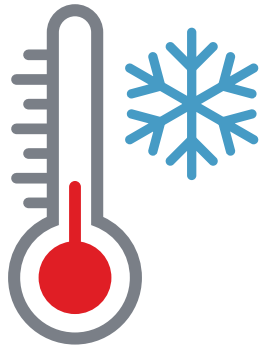


**BIG**

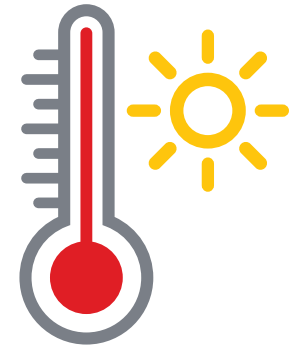


**LINE**





**COLD**



**HOT**

**WET**



**DRY**





**SOFT**



**HARD**



**ROUGH**



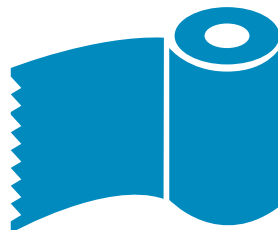
**SMOOTH**







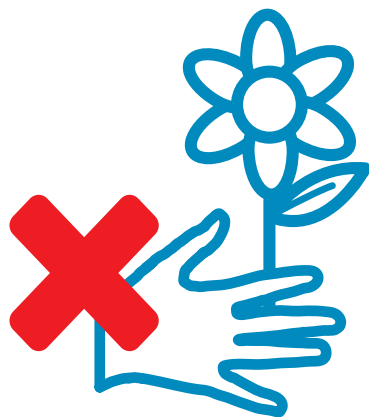
**I WOULD LIKE  
TO WITHDRAW**



**I NEED TO GO  
TO THE BATHROOM**



**I'M HUNGRY**



**I CANNOT TOUCH**

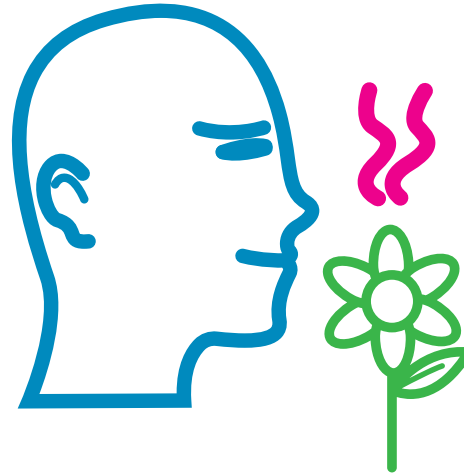


**I'M TIRED / I CAN'T WALK**





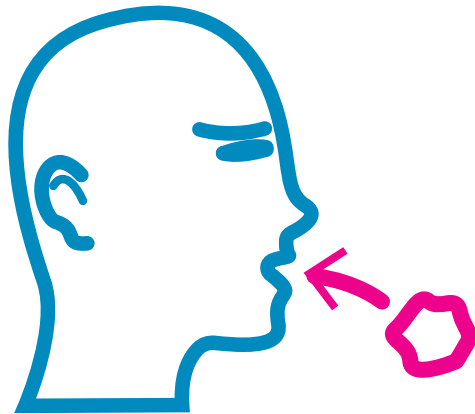
**LISTEN**



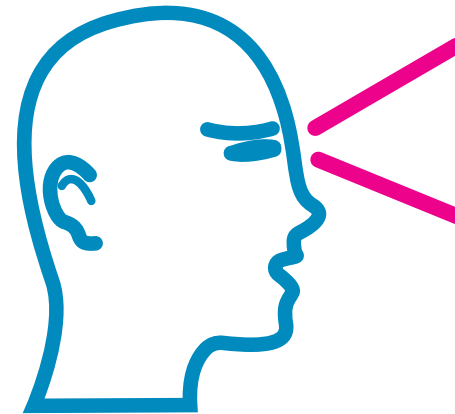
**SMELL**



**TOUCH**



**EAT**



**LOOK**

